



Committing to the future

The precise thermal imager with outstanding features



testo 885



The advantages of testo 885



Detector size 320 x 240 pixels

With 76.800 temperature measurement points, the measurement objects are detected in excellent image quality, very clearly and precisely.



SuperResolution technology (to 640 x 480 pixels)

SuperResolution technology improves the image quality by one class, i.e. the resolution of the thermal images is four times higher.



Thermal sensitivity < 30 mK

Thanks to an excellent temperature resolution of < 30 mK, even the smallest temperature differences are visible.



Large field of view thanks to 30° lens

With the 30° standard lens, large image sections are immediately recognized, and the temperature distribution of the measurement object recorded at a glance.



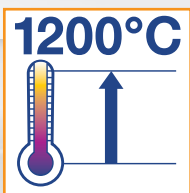
Panorama image assistant

For large measurement objects, the panorama image assistant allows the analysis and documentation of a total image stitched together from many individual images. There is no need to administer, view and compare several images.



SiteRecognition technology

For repetitive thermography of similar measurement objects, the SiteRecognition technology offers the direct recognition, allocation and archiving of the measurement sites, as well as the automatic allocation and archiving of the thermal images.

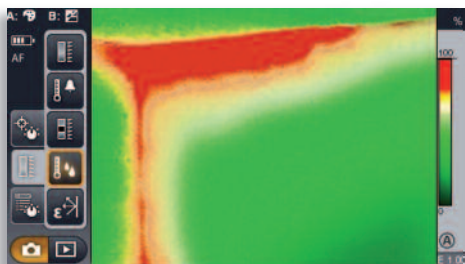


High temperature up to 1200°C

With the high temperature option, the measuring range can be flexibly extended up to 1200 °C.



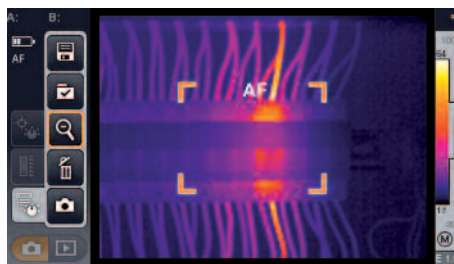
Exchangeable lenses



Special measurement mode for detecting areas with danger of mould



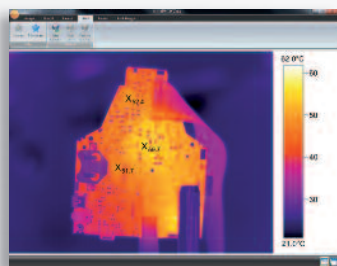
Lens protection glass



Auto focus



Built-in digital camera with power LEDs



USB video measurement with up to 3 measurement points



Voice recording using headset

Function of the PC software: Image overlay TwinPix



Ideal ergonomics and intuitive operation



Ergonomic handle

In order to be able to be used safely and efficiently in all applications, the testo 885 offers sophisticated ergonomics. The fold-out, rotatable display allows images to be recorded above the user's head. The ergonomic rotatable handle additionally allows secure handling in difficult-to-access places (such as at floor level).



Flexible fold-out, rotatable display



Intuitive hybrid operation

With the intuitive hybrid operation, input by touchscreen can be selected in addition to the proven joystick operation. In order to always have a hand free (e.g. for safety reasons), one-hand operation by joystick is recommended. In order to navigate through the menu directly on the display, touchscreen operation is the best choice.

